

## Care of your Kensington furniture

To keep your furniture in good condition we recommend that in addition to regular dusting with a soft clean duster, an occasional wipe with a chamois leather rinsed in a mild detergent solution is beneficial.

Proprietary sprays must not be used.

Kensington is made with real wood and all timbers exposed to natural light do mellow with age. Additionally whilst we do hand

select our timbers for each individual piece and group timbers for a particular order, all wood is a natural product and so no two pieces will be identical.

For the full Lounge System where a backboard is attached, instructions on assembly and fixing kits are included when you receive your furniture. Additionally base units attached to top units will have securing fastenings.



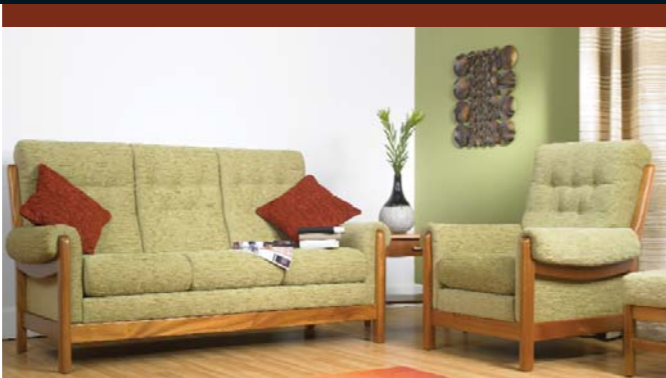
**GREAT BRITISH FURNITURE**  
Member of the British Furniture Manufacturers Association

Proud to be a British manufacturer of Distinctive Furniture...



■ Awarded the prestigious Guild Mark for excellence in design, materials, workmanship and function.

■ A private run family business established since 1887



Sutcliffe have an extensive sofa collection too... the **CADERA** range

established 1887  
**SUTCLIFFE**  
furniture

Frostholve Mill, Burnley Road,  
Todmorden, Lancashire OL14 7ED

T: 01706 815133

F: 01706 818701

E: [sales@sutcliffegroup.co.uk](mailto:sales@sutcliffegroup.co.uk)

W: [www.sutcliffefurniture.co.uk](http://www.sutcliffefurniture.co.uk)

Your Sutcliffe Stockist:



**GREAT  
BRITISH  
DESIGN**



**KENSINGTON  
SUTCLIFFE FURNITURE**

## Kensington Lounge Systems from Sutcliffe Furniture

are the ultimate, versatile solution for you to display all your lounge items from lamps and books through to your TV and theatre sound system. Additionally it is designed to complement and enhance the display of your treasured artifacts.

Contemporary in design Kensington has simple lines and lets the wood and illuminated shelf system speak for themselves allowing your display items to be promoted to the fore.

It is made with real wood and real wood veneers in a Mahogany or Teak finish. The beautiful grain in the wood will give warmth to all interiors.

The state of the art illuminated shelving system within the glazed units highlights all of those object d'art you wish to display along with the glass shelf itself. Not forgetting the finishing touches, the frosted stainless steel handles complete the linear lines of the units. All the drawers are assembled with dove tail joints for strength and a quality finish.

Kensington has been created with real homes in mind and its flexibility in connecting the individual modular units means that you can choose, create and so own an individual piece of furniture that you have created from your specifications. With the ever increasing size of TVs Kensington has this covered with a multitude of options for you to enhance its display.

### FRONT COVER SYSTEMS

Top right : **System A** (9K852TT x 2, 9K1052BP, 9K853, 9K105, 9K852)  
 Upper Left : **System D** (9K431TTL, 9K8551BP, 9K432MTR, 9K431R, 9K854, 9K432)  
 Lower Left : **System W** (3K852TT, 3K430TT, 3K432, 3K105, 3K852)



**System B** (9K431TTL, 9K1052BP, 9K852TT, 9K432, 9K105, 9K852)

The versatility of Kensington enables you to add pieces to your original pieces adapting to your lifestyle requirements. So if you were thinking of moving home or just re designing your interior, you can add complementary pieces if sizing up, or, remove and relocate those items you all ready own.

Kensington has been designed and is manufactured by craftsmen and women who have had skills handed down to them from the generations of previous craftsmen. Nestled in the Pennines Sutcliffe Furniture creates distinctive furniture that is made to last.

Whilst making our furniture in Britain we also consider our environment and only use timbers that are sourced from sustainable forests.

Established since 1887 Sutcliffe Furniture is proud to be a British manufacturer of quality furniture.



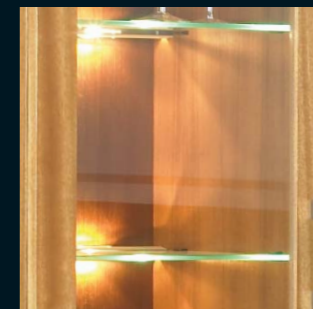
**Run** (3K430, 3K105, 3K431R)

# KENSINGTON

established  
1887  
**SUTCLIFFE**  
furniture

Kensington Lounge Systems are created for the lounge area of the home. For the ultimate statement in furniture display and for the owner wishing to utilise wall space, a full lounge system will fulfil this requirement. There are examples of systems throughout this brochure where each unit is individually itemised. These systems are for a guide to help you create your personal lounge system. The essential part of Kensington is its versatility and the dozens of system options that can be created.

All units are available in a Teak finish or Mahogany finish. (Teak finish numbers start with 9K and Mahogany finish numbers start with 3K)



4 | 5

# A VERSATILE LOUNGE SYSTEM



System A [9K852TT x 2, 9K1052BP, 9K853, 9K105, 9K852]



System T [9K432FL, 9K1053BP, 9K431FR, 9K105]



System C [9K431TTL, 9K8551BP, 9K852TT, 9K432, 9K854, 9K852]



System D [3K431TTL, 3K8551BP, 3K432MTR, 3K431R, 3K854, 3K432]

# MODULAR KENSINGTON

6 | 7

All homes have different design requirements often based upon structural constraints. Kensington offers you the flexibility to create your furniture needs to meet your space and your display wants. These two pages of Kensington demonstrate its modular adaptability with displays of runs, units and lounge tables.



Tall Unit (9K431R, 9K430TT) Run (9K432, 9K105, 9K431R) Coffee Table 9K8160



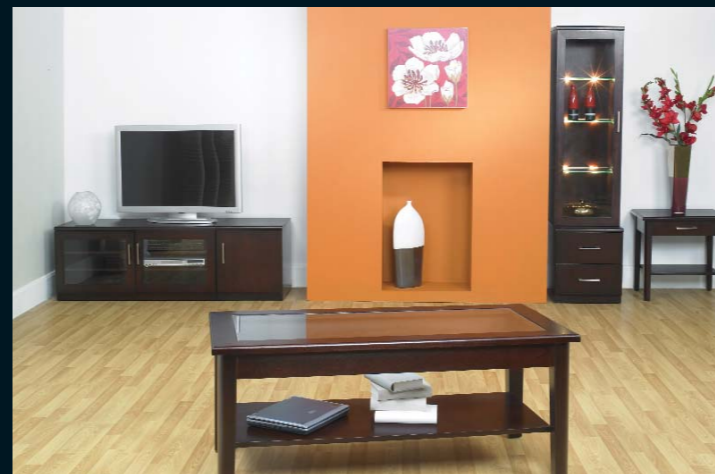
Tall unit (9K431TTL, 9K432) Run (9K432, 9K854, 9K431R)



Tall Unit (3K852TT, 3K852) Run (3K105, 3K432) Lamp Table 3K8120



Tall Unit (3K431TTL, 3K430) Run (3K105, 3K432) Lamp Table 3K8120  
Coffee Table 3K8160G



Coffee Table 3K8160G Run (3K105, 3K431R) Tall Unit (3K431TTL, 3K432)  
Lamp Table 3K8120



Run (3K430, 3K105, 9K431R) Tall Unit (3K432, 3K430TT)



# INDIVIDUAL KENSINGTON

To complete your interior collection Kensington has a complementary collection of lounge tables made with solid wood frames and come with either real wood veneered tops or glass tops. There are four to choose from within the range and like the units they can be produced in either Teak or Mahogany finish. All tables have a lower shelf for extra storage.



Lamp Table  
3K8120



Glass Top Coffee Table  
3K8160



Square Side Table  
9K859G



Coffee Table  
9K8160G

## Planning and Choosing your Kensington furniture.

- 1 You first of all need to decide where you wish the furniture to sit in your home and measure the spaces available.
- 2 Decide whether you want a full system, individual wall units, runs or a combination.
- 3 Decide which wood finish will suit your interior. Teak or Mahogany finish (**unit numbers for Teak products begin with 9K and for Mahogany 3K**)
- 4 Decide whether you want opening units to be a Left hand hinged (L) or Right hand hinged (R) as all hinged units have this choice. As a rule of thumb doors open from the centre part of the furniture to the outside.
- 5 Decide on the height you wish your furniture to be (**base height**, **base height with medium top**, base height with **tall tops** or a combination of heights as on System D
- 6 If you select a full system and wish to have the TV Backboard this comes with the option of two depths and two widths. (System T has the full board back.
- 7 Armed with this information you can use these dimension pages to plan for your Kensington furniture.
- 8 All measurements are approximate.
- 9 All the units with lights included come with a foot switch.

## KENSINGTON SYSTEMS



**System A**  
(w: 279cm x d: 47cm x h: 176cm)



**System B**  
(w: 235cm x d: 47cm x h: 176cm)



**System C**  
(w: 215cm x d: 47cm x h: 176cm)



**System D**  
(w: 173cm x d: 47cm x h: 176cm)



**System T**  
(w: 195cm x d: 47cm x h: 134cm)

## KENSINGTON INDIVIDUAL UNITS

### BASE UNITS



**9K853**  
**3K853**  
w : 85cm  
d : 47cm  
h : 48cm



**9K852**  
**3K852**  
w : 85cm  
d : 47cm  
h : 48cm



**9K430**  
**3K430**  
w : 43cm  
d : 47cm  
h : 48cm



**9K432**  
**3K432**  
w : 43cm  
d : 47cm  
h : 48cm



**9K431L**  
**3K431L**  
w : 43cm  
d : 47cm  
h : 48cm



**9K431R**  
**3K431R**  
w : 43cm  
d : 47cm  
h : 48cm



**9K431FL**  
**3K431FL**  
w : 43cm  
d : 37cm  
h : 133cm



**9K431FR**  
**3K431FR**  
w : 43cm  
d : 37cm  
h : 133cm



**9K105**  
**3K105**  
w : 105cm  
d : 47cm  
h : 48cm



**9K854**  
**3K854**  
w : 85cm  
d : 47cm  
h : 48cm

### TALL TOP UNITS



**9K430TT**  
**3K430TT**  
w : 43cm  
d : 37cm  
h : 127cm



**9K431TTR**  
**3K431TTR**  
w : 43cm  
d : 37cm  
h : 127cm



**9K431TTL**  
**3K431TTL**  
w : 43cm  
d : 37cm  
h : 127cm



**9K852TT**  
**3K852TT**  
w : 85cm  
d : 37cm  
h : 127cm

### MEDIUM TOP UNITS



**9K432MTL**  
**3K432MTL**  
w : 43cm  
d : 37cm  
h : 114cm



**9K432MTR**  
**3K432MTR**  
w : 43cm  
d : 37cm  
h : 114cm



**9K430MT**  
**3K430MT**  
w : 43cm  
d : 37cm  
h : 114cm



**9K431MTR**  
**3K431MTR**  
w : 43cm  
d : 37cm  
h : 114cm



**9K431MTL**  
**3K431MTL**  
w : 43cm  
d : 37cm  
h : 114cm

### BACK PANELS



**9K8551BP**  
**3K8551BP**  
Standard  
w : 85cm  
h : 65cm



**9K1051BP**  
**3K1051BP**  
Wide Standard  
w : 105cm  
h : 65cm



**9K8552BP**  
**3K8552BP**  
Large  
w : 85cm  
h : 80cm



**9K1052BP**  
**3K1052BP**  
Wide Large  
w : 105cm  
h : 80cm



**9K1053BP**  
**3K1053BP**  
Floor Standing  
w : 105cm  
h : 131cm

### TABLES



**9K8160G**  
**3K8160G**  
w : 120cm  
d : 60cm  
h : 51cm



**9K8160**  
**3K8160**  
w : 120cm  
d : 60cm  
h : 51cm



**9K8120**  
**3K8120**  
w : 57cm  
d : 43cm  
h : 56cm



**9K859G**  
**3K859G**  
w : 60cm  
d : 60cm  
h : 51cm